

Richard Lewer
Misadventures

21 September - 2022

{Suite}

241 Cuba Street, Wellington
suite.co.nz | +64 4 976 7663





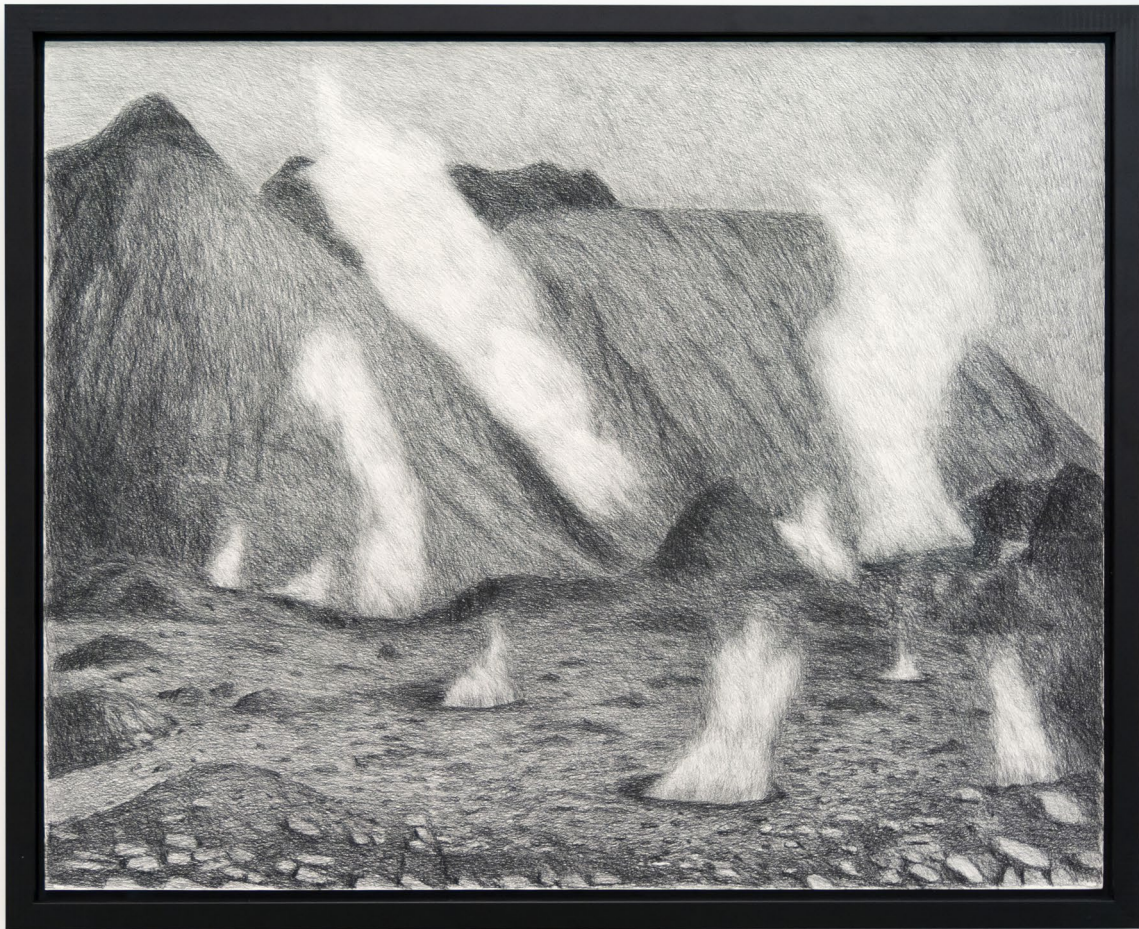
Richard Lewer
Wellington Tent Protest, 2022
Framed charcoal on museum rag board
880 x 1090 mm
\$9,000 incl. GST

{Suite}
241 Cuba St, Wellington, NZ
suite.co.nz | +64 4 976 7663



Richard Lewer
South Africa Protest, 2022
Framed charcoal on museum rag board
880 x 1090 mm
\$9,000 incl. GST

{Suite}
241 Cuba St, Wellington, NZ
suite.co.nz | +64 4 976 7663



Richard Lewer
White Island, 2022
Framed charcoal on museum rag board
880 x 1090 mm
\$9,000 incl. GST

{Suite}
241 Cuba St, Wellington, NZ
suite.co.nz | +64 4 976 7663



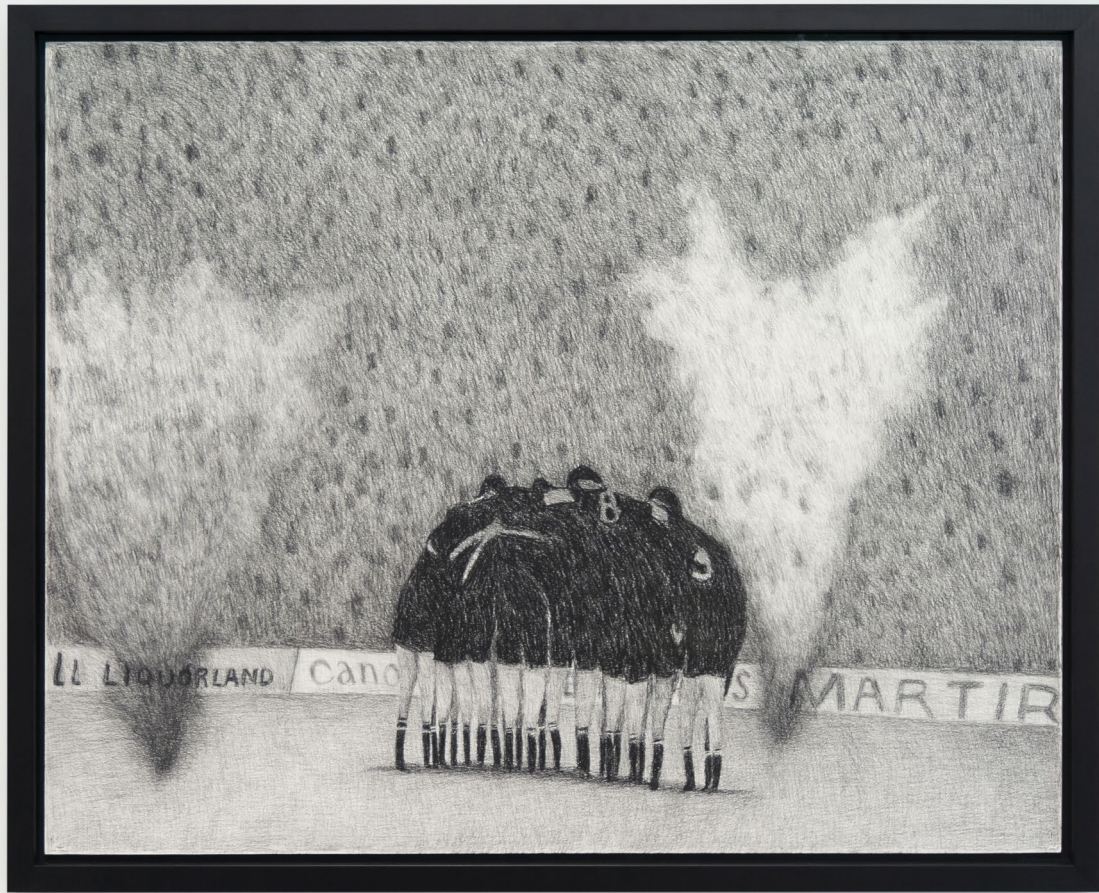
Richard Lewer
Kaikoura Lights, 2022
Framed charcoal on museum rag board
880 x 1090 mm
\$9,000 incl. GST

{Suite}
241 Cuba St, Wellington, NZ
suite.co.nz | +64 4 976 7663



Richard Lewer
Huka Falls, 2022
Framed charcoal on museum rag board
880 x 1090 mm
\$9,000 incl. GST

{Suite}
241 Cuba St, Wellington, NZ
suite.co.nz | +64 4 976 7663



Richard Lewer
Flour Bombed All Blacks vs South Africa, 2022
Framed charcoal on museum rag board
880 x 1090 mm
\$9,000 incl. GST

{Suite}
241 Cuba St, Wellington, NZ
suite.co.nz | +64 4 976 7663



Richard Lewer
Stop the South African Rugby Tour, 2020
Framed archival pigment ink on museum rag board
290 x 370 mm
\$2,500 incl. GST

{Suite}
241 Cuba St, Wellington, NZ
suite.co.nz | +64 4 976 7663



Richard Lewer
Rainbow Warrior, 2020
Framed archival pigment ink on museum rag board
290 x 370 mm
\$2,500 incl. GST

{Suite}
241 Cuba St, Wellington, NZ
suite.co.nz | +64 4 976 7663



Richard Lewer
The Rescue - Wahine Disaster, 2020
Framed archival pigment ink on museum rag board
290 x 370 mm
\$2,500 incl. GST

{Suite}
241 Cuba St, Wellington, NZ
suite.co.nz | +64 4 976 7663



Richard Lewer
The Raetihi Bushfire, 2020
Framed archival pigment ink on museum rag board
290 x 370 mm
\$2,500 incl. GST

{Suite}
241 Cuba St, Wellington, NZ
suite.co.nz | +64 4 976 7663



Richard Lewer
The Frankton Tornado 1948, 2020
Framed archival pigment ink on museum rag board
290 x 370 mm
\$2,500 incl. GST

{Suite}
241 Cuba St, Wellington, NZ
suite.co.nz | +64 4 976 7663



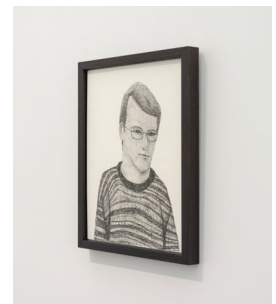
Richard Lewer
Boks Go Home, 2020
Framed archival pigment ink on museum rag board
290 x 370 mm
\$2,500 incl. GST

{Suite}
241 Cuba St, Wellington, NZ
suite.co.nz | +64 4 976 7663



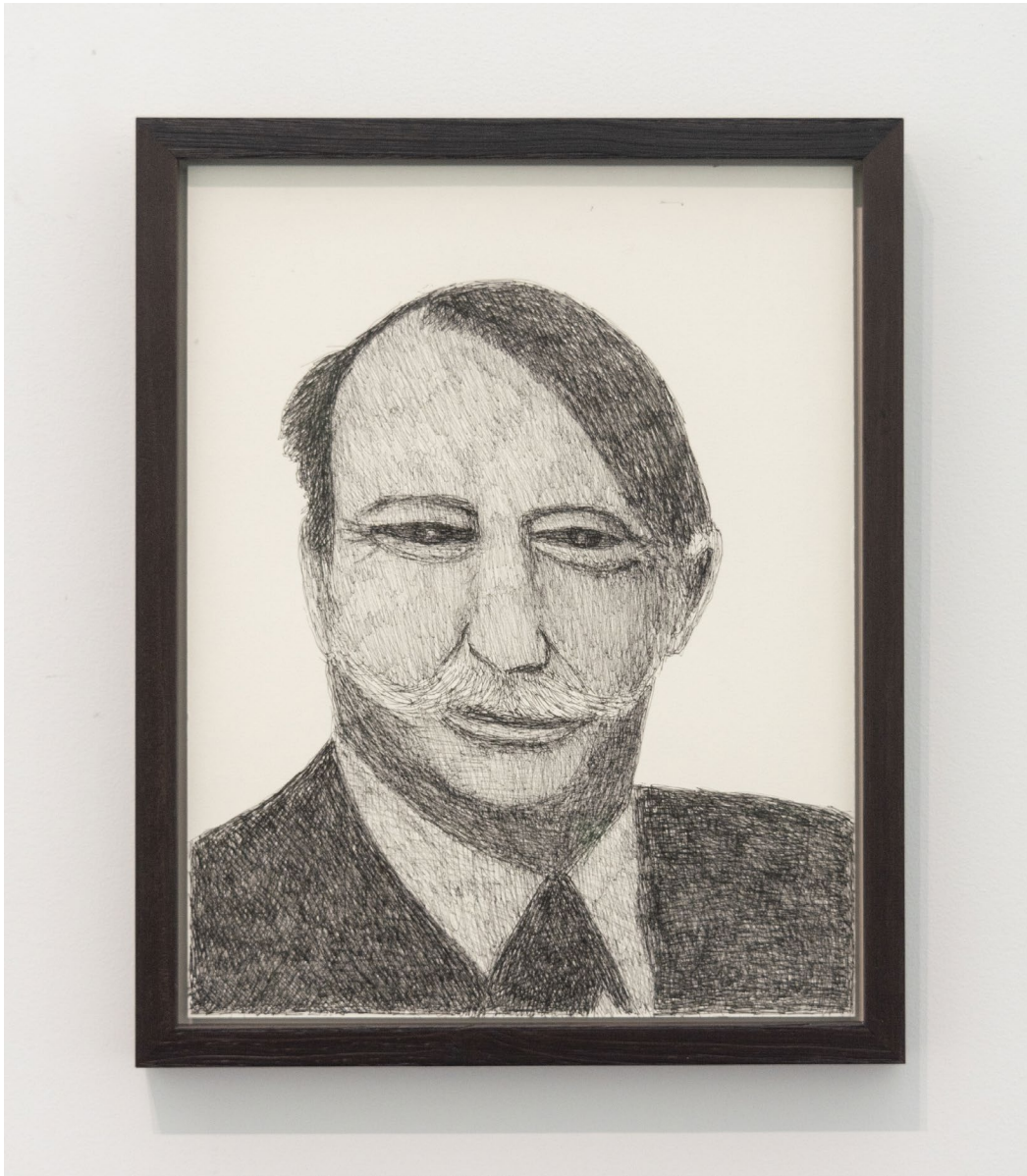
Richard Lewer
The Crewe Murder Case, 2020
Framed archival pigment ink on museum rag board
290 x 370 mm
\$2,500 incl. GST

{Suite}
241 Cuba St, Wellington, NZ
suite.co.nz | +64 4 976 7663



Richard Lewer
David Bain, 2020
Framed archival pigment ink on museum rag board
290 x 370 mm
\$2,500 incl. GST

{Suite}
241 Cuba St, Wellington, NZ
suite.co.nz | +64 4 976 7663



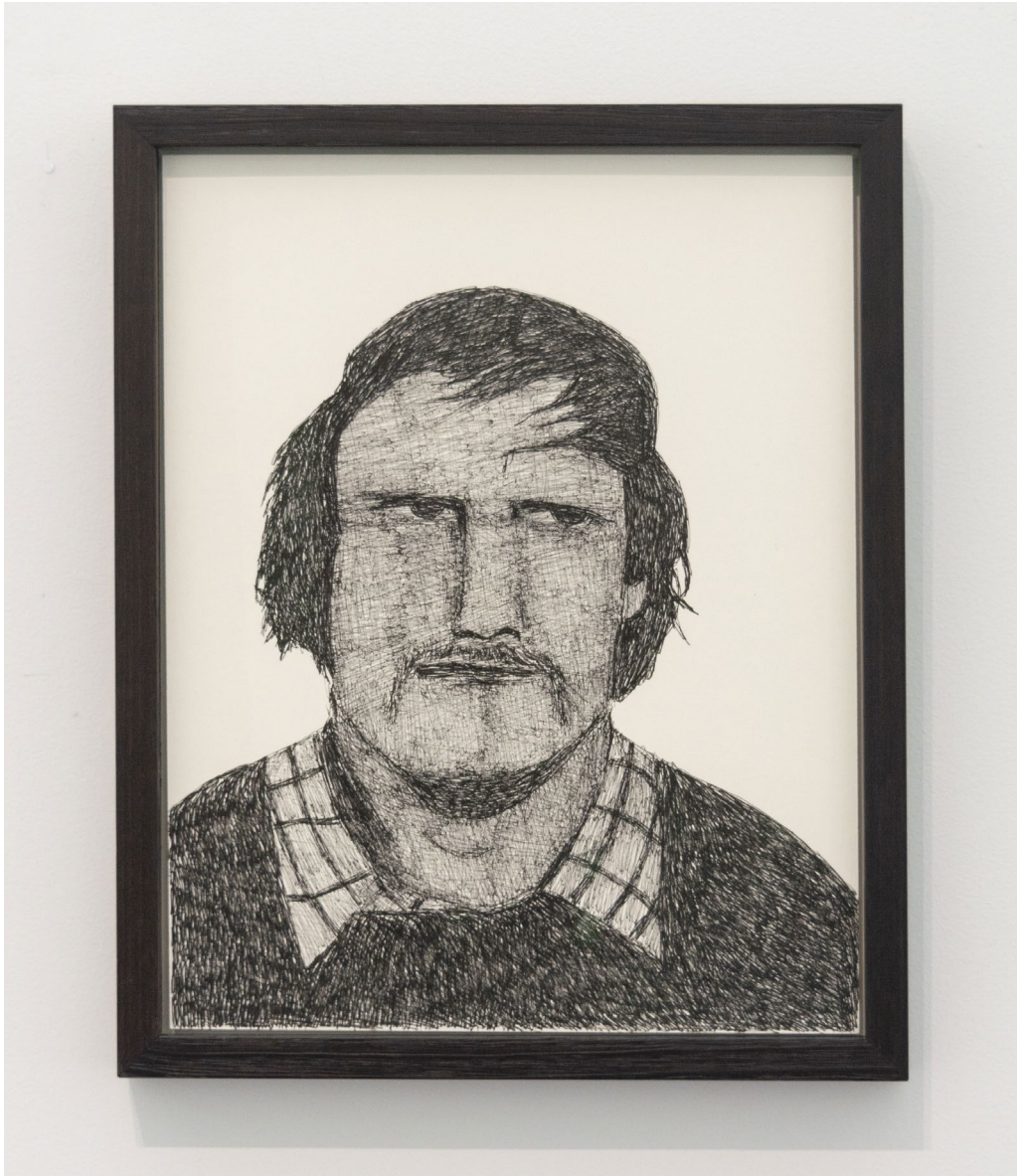
Richard Lewer
Peter Plumley-Walker, 2020
Framed archival pigment ink on museum rag board
290 x 370 mm
\$2,500 incl. GST

{Suite}
241 Cuba St, Wellington, NZ
suite.co.nz | +64 4 976 7663



Richard Lewer
Tracey Ann Patient, 2020
Framed archival pigment ink on museum rag board
290 x 370 mm
\$2,500 incl. GST

{Suite}
241 Cuba St, Wellington, NZ
suite.co.nz | +64 4 976 7663



Richard Lewer
David Gray, 2020
Framed archival pigment ink on museum rag board
290 x 370 mm
\$2,500 incl. GST

{Suite}
241 Cuba St, Wellington, NZ
suite.co.nz | +64 4 976 7663

Misadventures, is an ongoing series of drawings revisiting some of New Zealand's grimmer news stories and moments in history.

The majority of the pen drawings were made at the same time as Lewer's painting series *NZ Disasters* (2020), which is held in the Auckland Art Gallery collection. Like the subject of true crime itself this series is an ongoing thread through Lewer's practice, unfolding as events take place.

What Lewer finds most interesting is the residue catastrophic events imprint on our sublime landscapes as much as our people. And he has a fascination with the often imprecise and malleable nature of human memory. The pen drawings describe events in hard clear documented recollection, while the charcoal implies a more blurred focus.

Lewer accepts trauma as an inevitable part of a society's psyche: something to be witnessed and worked through. We are all potentially just one-step away from our own misadventure.